



Call Me  
Mama!



It's never too late  
to fight for a new family.



In 1988 Harlem's Public Housing, a lonely actress uses her acting skills to forge connections with troubled teenagers.

As she struggles to reconcile her own desires with the harsh truths of getting old, she learns that sometimes the hardest roles to play are the ones we assign ourselves.

There's a big problem with her plan - it clashes with reality.



**DRAMA / COMEDY** - Short-film - 23 minutes

SYNOPSIS - Harlem, NY, 1988

Call me Mama, is a heart-felt dramedy about love, respect and understanding. And how in the harshest environments, people from different generations and racial backgrounds can become part of the same community, helping each other and creating family bonds without the need of blood relationships.

A lonely and forgotten Jewish actress in her late 80s, Olga Benowitz, is a victim of abandonment by her family.

She lives alone in a decaying Harlem Public Housing in the late 1980's, confused, lost, frightened and showing early signs of Alzheimer.

One day, tired of her unstable and dreary life, she decides that if her family doesn't really care for her, she will recruit a new family.

Using her acting skills, she will pretend to suffer from Alzheimer's and create a strong bond with a group of young troubled teenagers that hang around the Public Housing courtyard, that have their issues coping with their own lives.

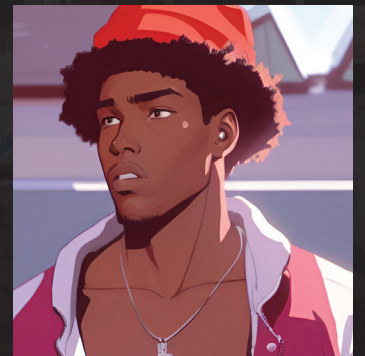
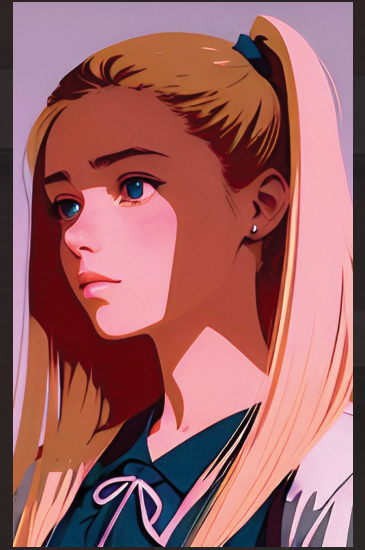
Together they will form a peculiar and charming group. An awkward start will turn into great friendships, in which everybody will learn from each other's struggles and hopes.

Building a link based on trust, love and understanding. But reality will soon take them in a different direction.





CHARACTERS







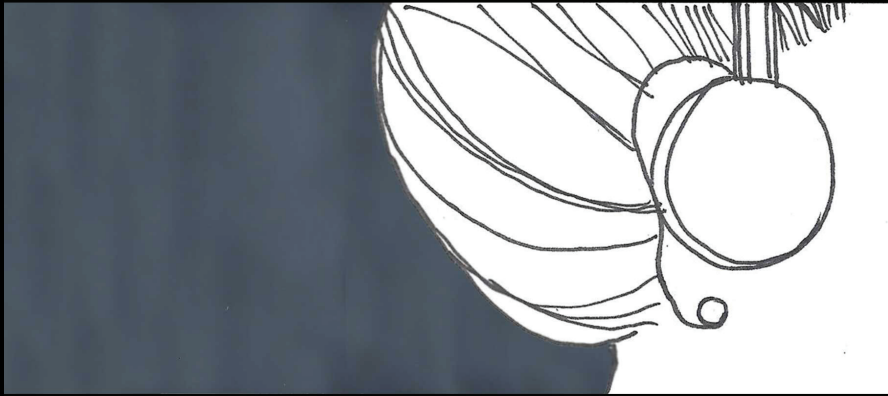


*STORYBOARD SAMPLE*





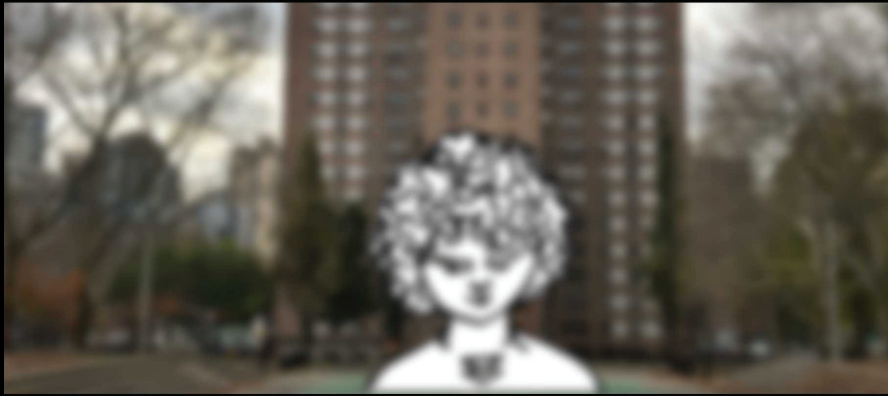




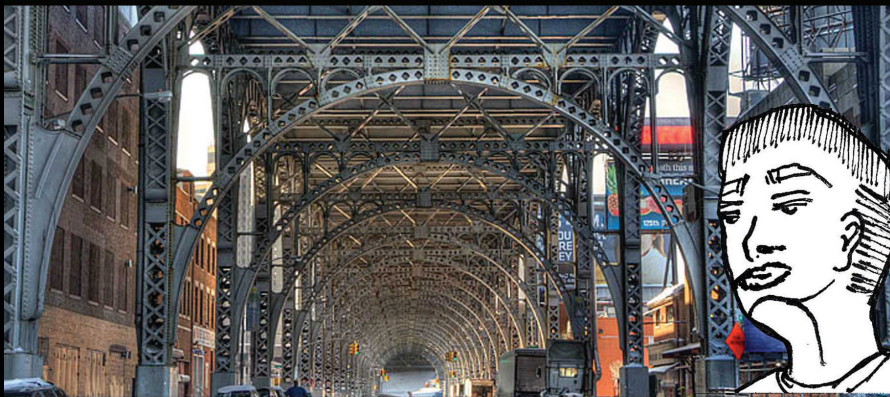
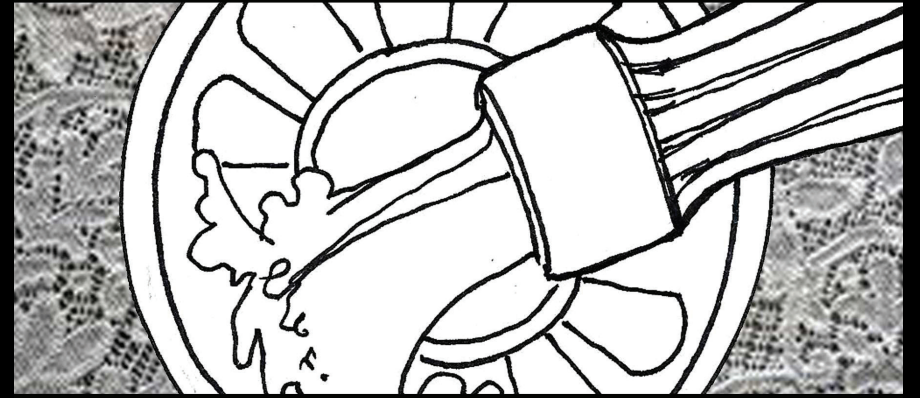




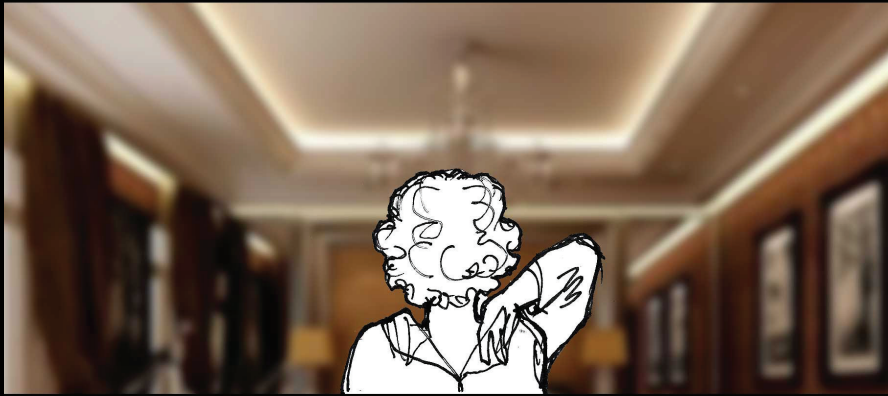




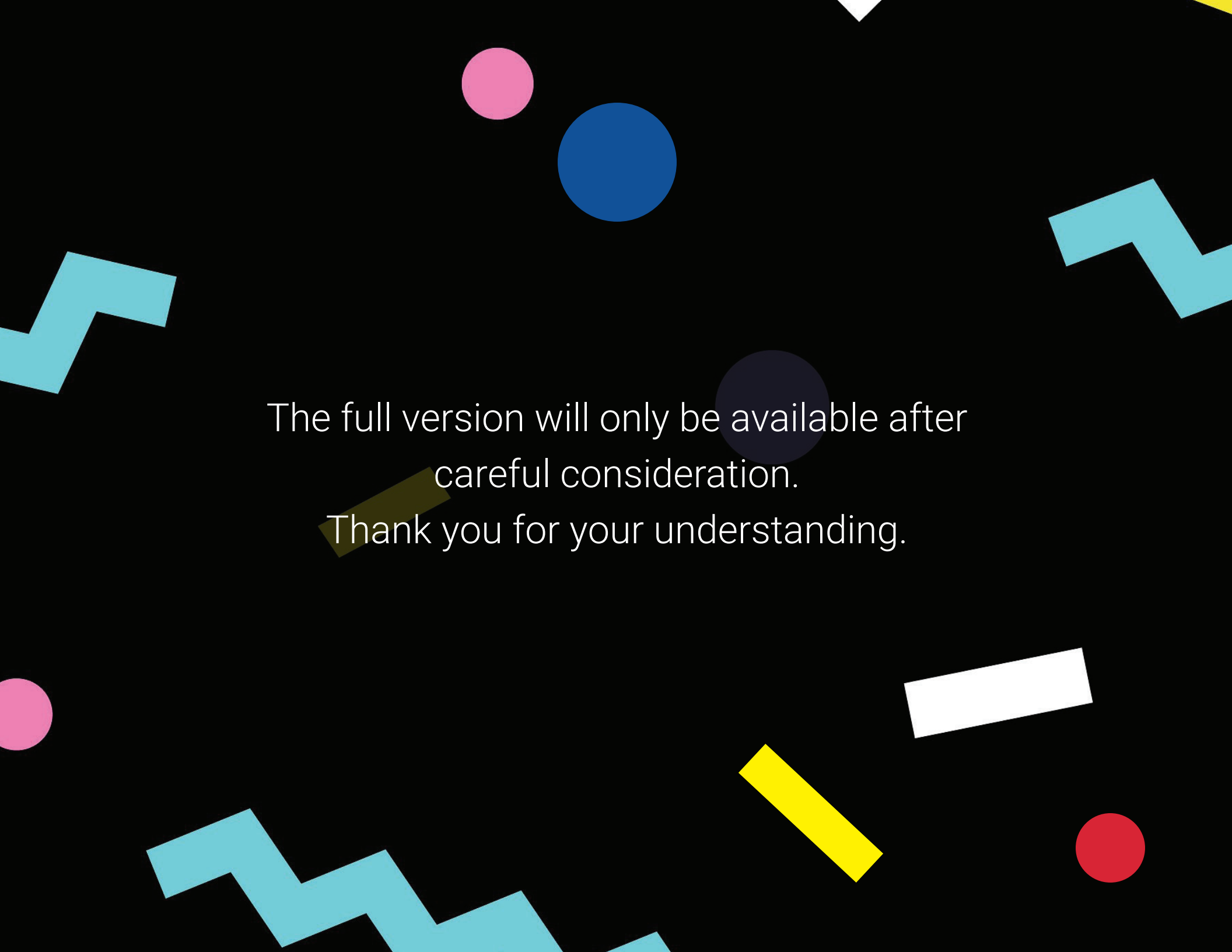










The background is black and features several abstract geometric shapes. There are two pink circles, one blue circle, and one dark grey circle. There are also several light blue zigzag lines of varying lengths and orientations. Additionally, there are a few rectangular bars in white, yellow, and olive green, all scattered across the frame.

The full version will only be available after  
careful consideration.  
Thank you for your understanding.