
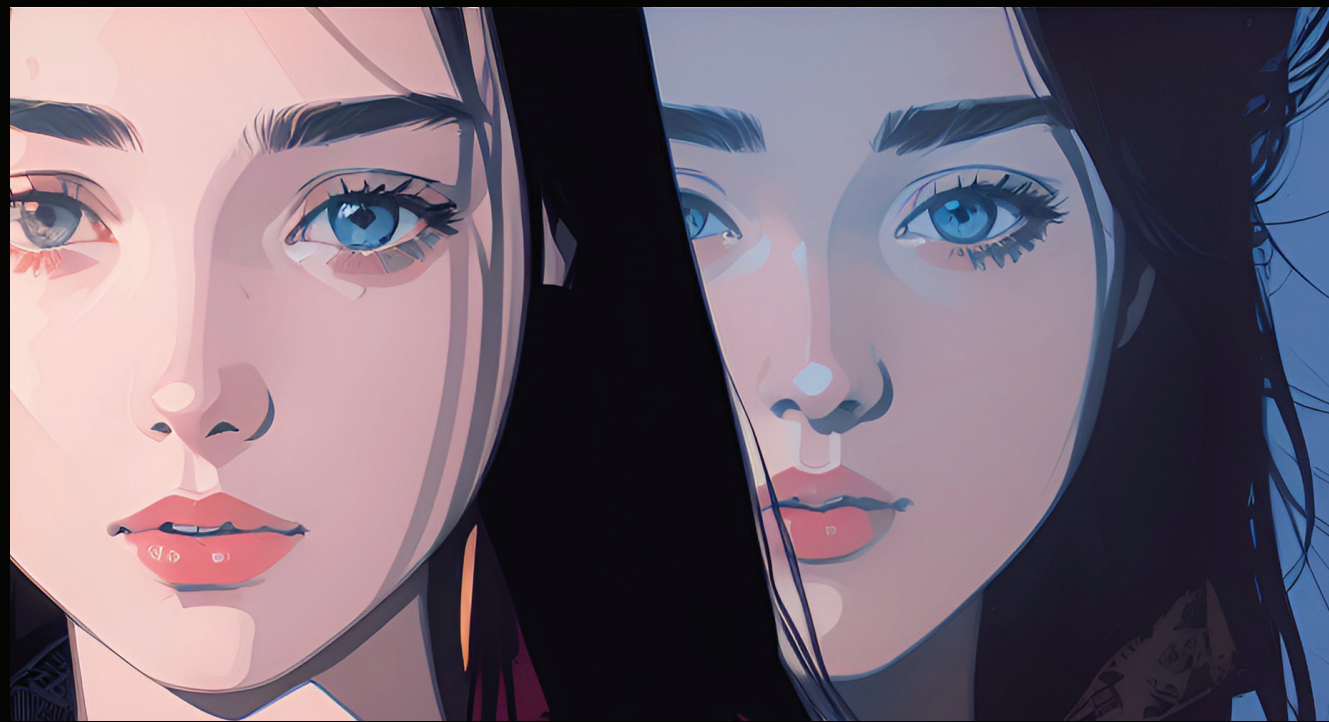


EDGE





Beware What
You Wish For.



A twisted blend of psychological thriller and showbiz satire, served up with a heavy dose of blistering dark comedy.

It unfolds through the eyes of a possibly-delusional starlet who's gone from the top of the world to the bottom of the barrel.

Underneath her typical Hollywood vanity, Madison carries a deep pain and guilt from a tragedy she'd rather forget.

Fortunately, no one knows about it - except for Magic Maddy, her alter ego, and the character she has been playing for six painful seasons.



GENRE: MYSTERY / DRAMA

TV Series Pilot

Madison Hunter is one of the biggest stars in the world, but she's also a massive pain in the ass. She plays Maddy McTrick, the peppy teenage witch who lives a double life and knows that the truest magic of all is friendship on the hit tween comedy "Magic Maddy" on the Family Funtime network.

As the show's sixth season comes to an end, Madison is eager to leave the saccharine show behind and rebrand herself as a serious actress.

Despite her co-stars' desperate pleas, especially from Kathryn who plays her best friend, Madison couldn't care less about staying.

Her network bosses and producers are freaking out about losing their cash cow, and her agent, Lisa, isn't fully on board either, but she's ready to fight for her client nonetheless.

Madison's biggest problem is being typecast, and no one wants to give her a chance at a serious role. Her people skills don't do her any favors either - she's an entitled, self-absorbed brat who seems to have forgotten the sweet, spunky girl she played on "Magic Maddy".

It looks like that girl is gone for good.

Or maybe not.

Magic Maddy won't leave Madison alone. She keeps showing up uninvited, talking to Madison, cheering her on, and teaching her good morals. It's enough to make Madison wonder if she's going crazy or if Magic Maddy is actually real. Maybe some roles are destined to stay with you, haunting you long after the cameras stop rolling.

As Madison tries to move on from her former stardom, Magic Maddy continues to follow her. But there are new characters in her life now, like Robert, her next-door neighbor who seems oblivious to her past as "Magic Maddy" and likes her for who she is. And then there's the cheerfully demented stalker who makes obscene phone calls to her, but also seems to like her for who she is, more or less.





Madison's also got new people to work with as she books new gigs, although they don't come very frequently.

And with every encounter with showbiz types - co-stars, directors, producers, casting people, the media, and even her loyal fans - Madison can't help but insult them.

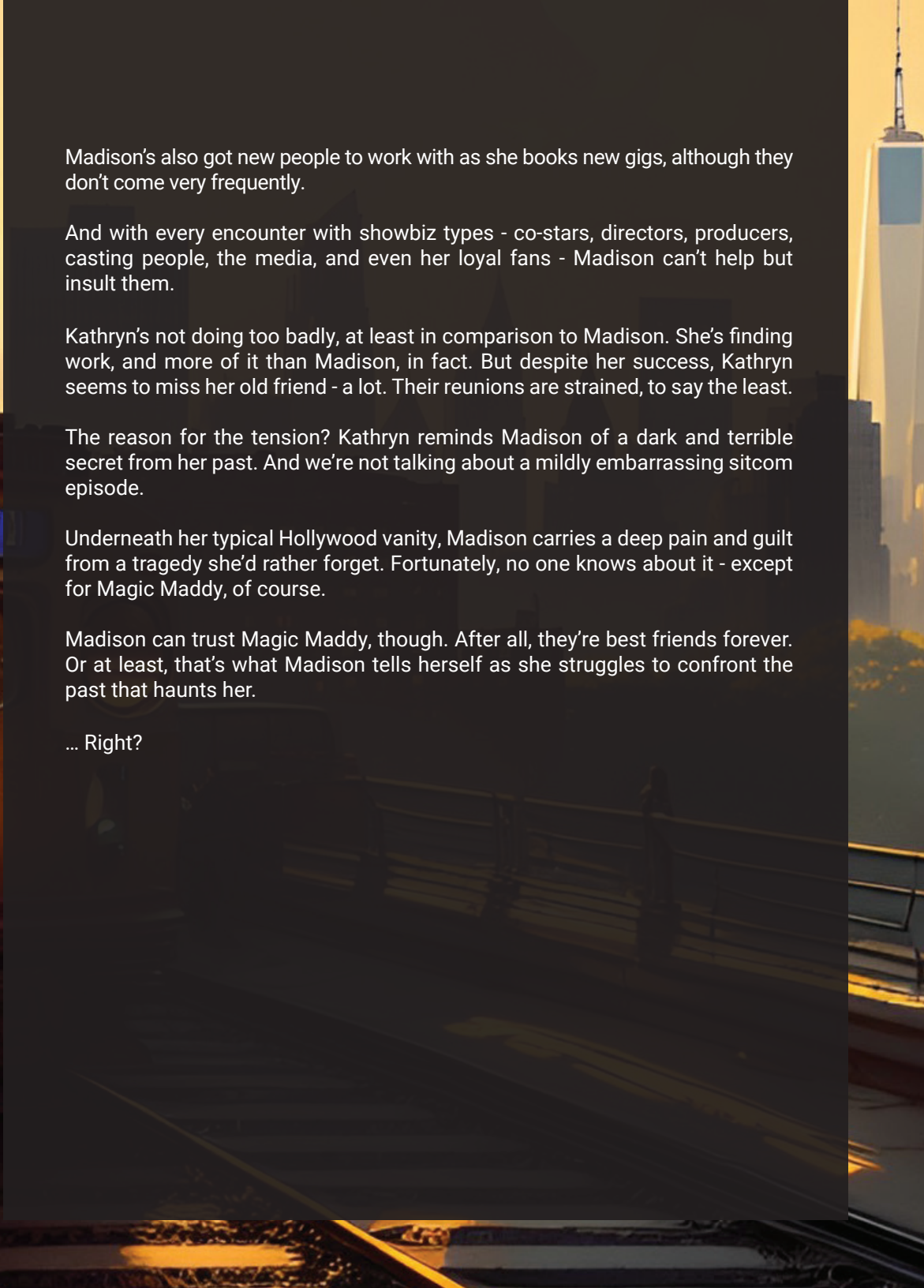
Kathryn's not doing too badly, at least in comparison to Madison. She's finding work, and more of it than Madison, in fact. But despite her success, Kathryn seems to miss her old friend - a lot. Their reunions are strained, to say the least.

The reason for the tension? Kathryn reminds Madison of a dark and terrible secret from her past. And we're not talking about a mildly embarrassing sitcom episode.

Underneath her typical Hollywood vanity, Madison carries a deep pain and guilt from a tragedy she'd rather forget. Fortunately, no one knows about it - except for Magic Maddy, of course.

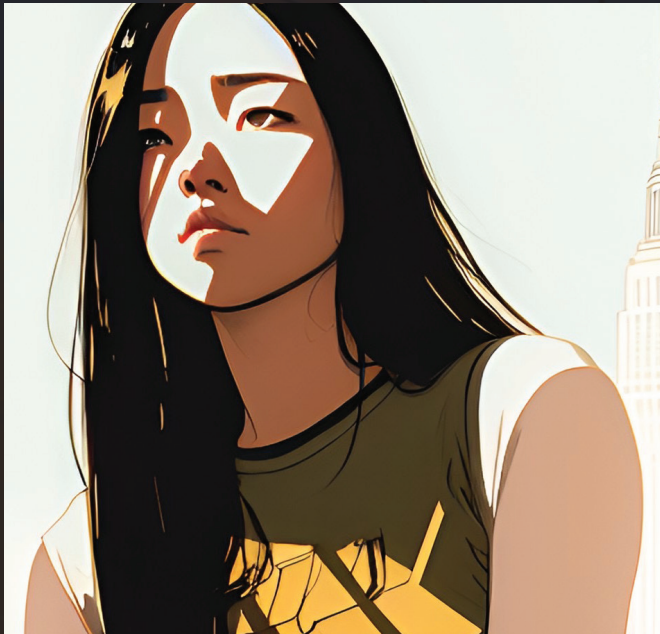
Madison can trust Magic Maddy, though. After all, they're best friends forever. Or at least, that's what Madison tells herself as she struggles to confront the past that haunts her.

... Right?

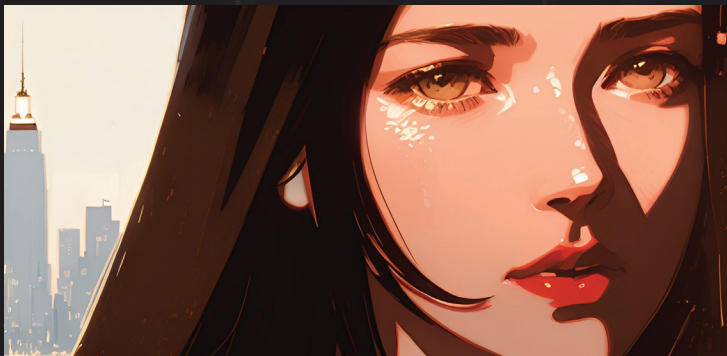
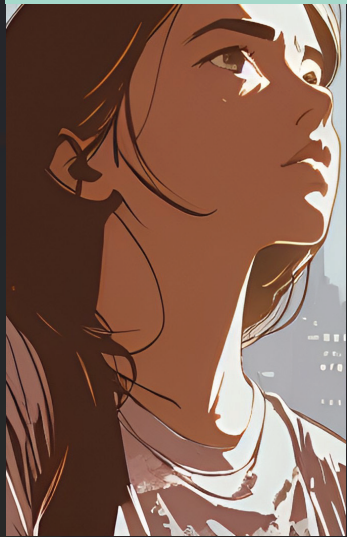


CHARACTERS

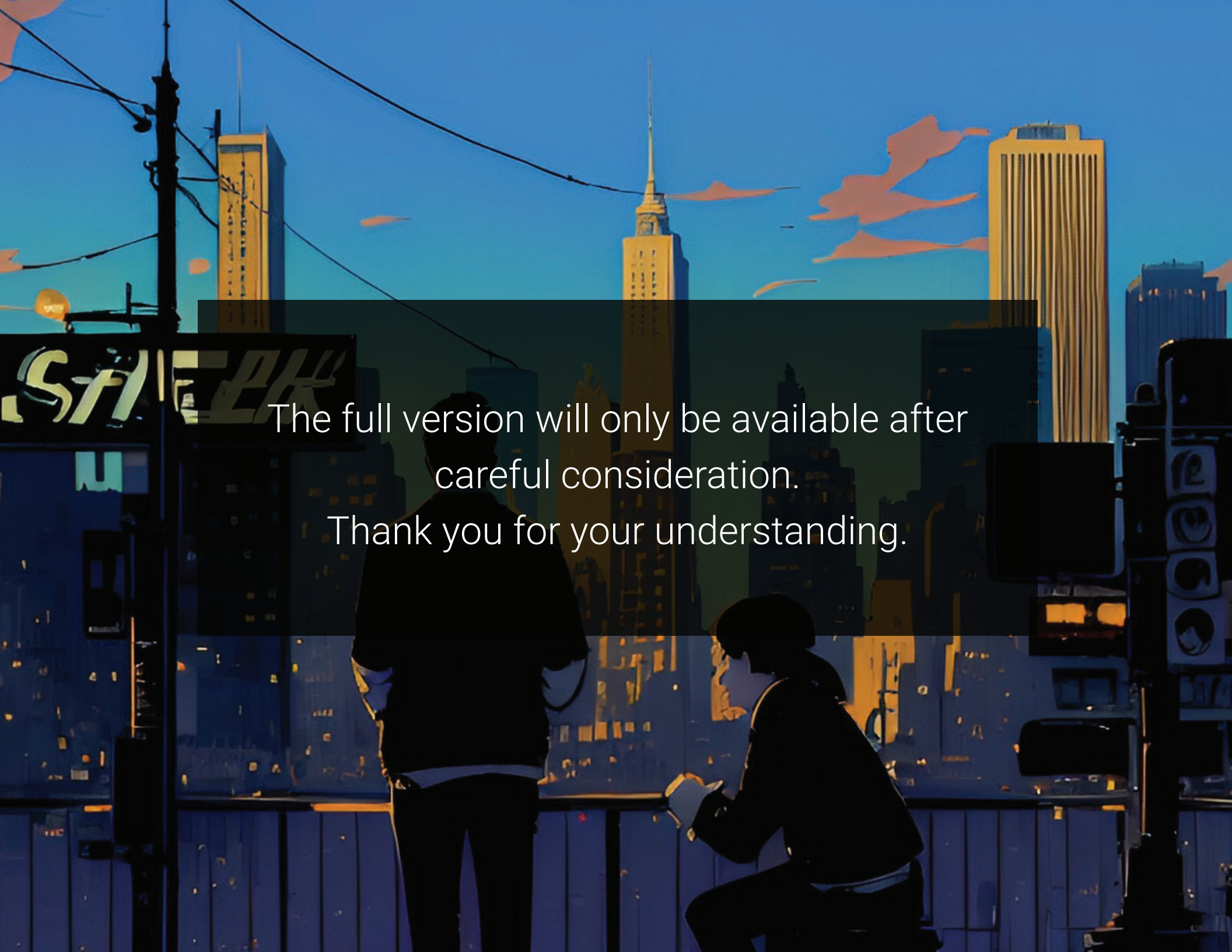




CHARACTERS







The full version will only be available after
careful consideration.
Thank you for your understanding.